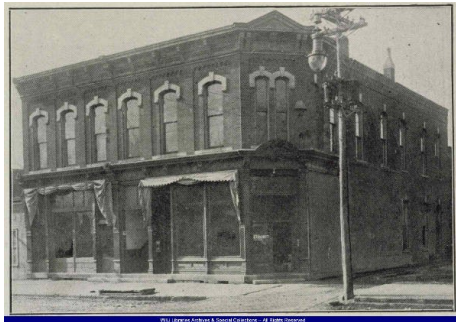


## West Side of the Square

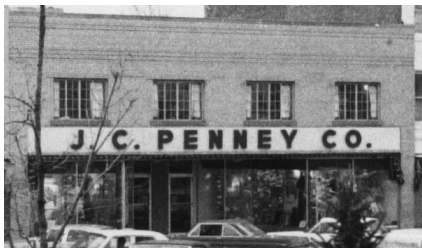


**W1: Advanced Rehab**  
Built in 1927 by Henry Zahren, who proudly put his name

on the front of the building. This structure has had many occupants, including a restaurant and rooftop garden which was known for its big band entertainment. It has also been a Kline's store and a Sears department store, and is now a physical therapy facility.



**W2: Louie's Diner** This building was built in 1883. Originally it housed the city offices and the public library and jail were on the 2nd floor.



**W3: R & R Spa** Campbell Hall, built in 1856, was one of the earliest buildings on the square. The building was a large structure that hosted minstrel shows, dances, lectures, and entertainment of all sorts. In 1940, it was demolished to make way for this two story structure that formerly was a J.C. Penney department store.

## North Side of the Square

### **N1: Country Insurance**

This brick building was built in 1871 and has a long history of being a drug store. Opening as Keefer Drug Store, it was the largest drug store in the county in the late 19th century. Inside the drug store was a popular soda fountain, where over the years young people would gather. At one point there was a ten foot long Italian marble counter with a solid mahogany back bar. For 118 years it was one of the oldest continuously run type of business on the square and a landmark in Macomb.



**N2: New Copperfield's Book Service/ Countywide Office Supply** From 1925 to 1988 this building was Ring's Store. Al Ring was the founder of the store and worked there for 56 years until his death in 1981. This establishment sold high quality department store merchandise.

All photos courtesy of

Archives and Special Collections,  
Western Illinois University Libraries

Welcome to Macomb's Courthouse Square!  
We invite you  
to explore and enjoy  
this unique historic district.

This self-guided tour celebrates the history of the Courthouse Square and the architecture that embodies it.

McDonough County was established in 1826 and Macomb was founded in 1831.

The story of Macomb's settlement and growth is written in the historic buildings of its downtown Courthouse Square.

The Western Illinois Museum:

- Preserves the important history of the region
- Teaches the community about the area's unique past
- Mounts three to four quality exhibits a year
- Receives over 2,600 visitors yearly
- Has the help of over 50 active volunteers
- Has the support of 125 members and business partners
- Conveniently located in downtown Macomb



201 South Lafayette Street  
Macomb, Illinois 61455  
309-837-2750  
info@westernillinoismuseum.org

Hours: 10:00am to 4pm  
Tuesday through Saturday  
Closed holidays  
Museum is free, donations appreciated

# A Self-Guided Walking Tour of the Macomb Historic Courthouse Square

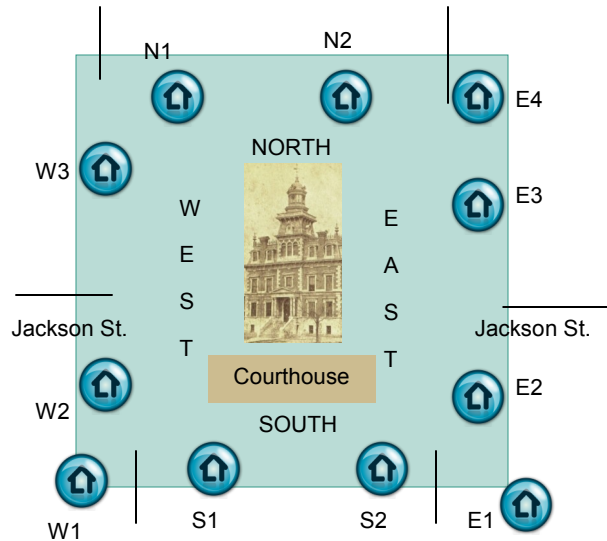


Western Illinois Museum



201 South Lafayette St  
Macomb, IL 61455

## Courthouse Square



### South

**S1: Chick's —103 South Side Sq.**

**S2: Terrell Title—117 South Side Sq.**

### East

**E1: Macomb Lodge No. 17-133 S. Randolph**

**E2: Randolph House /Envy— 3-5 East Side Sq.**

**E3: West Central IL Arts Center—25 East Side Sq.**

**E4: Century 21 Real Estate—119 N. Randolph**

### West

**W1: Advanced Rehab-130 S. Lafayette**

**W2: Louie's Diner-118 S. Lafayette**

**W3: R & R Spa—24 West Side Sq.**

### North

**N1: Country Insurance—100 North Side Sq.**

**N2: New Copperfield's Book Service/ County-wide Office Supply—120-122 North Side Sq.**

## The McDonough County Courthouse, Macomb Illinois



McDonough County has had three Courthouses.

The first was a log structure built in 1831.

In the fall of 1834 the first structure was replaced with a two story brick structure.

By the 1860s this building began to have structural problems and in 1873 a third courthouse was constructed.

The original design included a beautiful mansard roof with tin ornaments. Despite the roof's distinct style, it leaked and had to be replaced with the current style of roof in 1889.

## South Side of the Square

**S1: Chick's** Currently a restaurant, this building has had many uses since it was built in 1894. In 1920 it opened as the Macomb Clinic. The clinic occupied both floors of the building, and had 22 rooms with polished hardwood floors. The front was made of dark red bricks with five windows that contained prism glass. The doors were made of birch with cut glass doorknobs. From the 1960s through the 1990s it operated as Stites' Pharmacy.



## South Side of the Square

**S2: Terrell Title** Built in 1861 by Goram and Charles Cottrell. It was first a hardware store and sold stoves, tinware, farming implements, crockery and glassware. Wagons and other large items for sale were displayed in the vacant lot east of the building until 1872 when a building was built on the lot.



## East Side of the Square

**E1: Macomb Lodge No. 17**

Built in 1898, the building held the distinction of being the first four story building on the square. Built by Joseph Gamage, it was known as the Gamage Building and has housed offices and businesses for over 100 years. From 1908 until its closing in 1919, the Macomb Conservatory of Music operated in this building. In 1933, the Masons began using upper floors for meetings.



**E2: Randolph House/Envy**

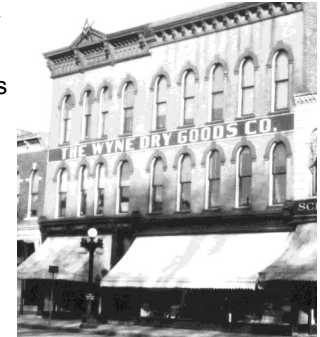
Once a thriving hotel, Lincoln slept here twice while campaigning for the 1858 state senator race. Built in 1856, the hotel provided a level of elegance almost unheard of in western Illinois. Bellboys carried luggage and there was a carriage shuttle to the train depot. In 1936 the northern part of the building was demolished, only one-half of the original structure remains.



## East Side of the Square

**E3: West Central Illinois Arts Center**

Originally built in 1881 to house shops on the ground floor with the Masonic Lodge on the upper floors. The Masons quickly grew out of the building and the structure became a strictly commercial building. For many years, the Wyne Department Store was on the ground floor and was a featured shopping destination of the square. It was called "The Big Store" and held extravagant fashion shows. After Wyne moved out, F.W. Woolworths, Kline's, and Maurice's occupied the building. In 2008 the building became the home of the WCI Arts Center.



**E4: Century-21** This was the location of the first courthouse made of logs.

Now a real estate office, this building was erected in 1917 as a bank. The limestone structure features Greek columns on either side of an arched doorway. Inside the bank were marble desks in the lobby and mahogany furniture. The vault had a steel door that weighed more than 8 tons. Three small WPA era murals decorate the second floor. The Union National Bank operated in this location from 1917 until 1997.



**Ground floor storefronts often alter the appearance of a building at street level. Look up at the second story of the buildings on the square. This often shows you what the building looked like when it was originally built.**